

Clarke®



150MM ELECTRIC EARTH BORER

MODEL NO: CEA150

PART NO: 3400997

OPERATING & MAINTENANCE INSTRUCTIONS

UK
CA | CE



GC0925 Rev 4

INTRODUCTION

Thank you for purchasing this CLARKE Electric Earth Borer designed for boring holes in soil only, for fence posts, re-forestation, and similar operations.

Before attempting to use this product, please read this manual thoroughly and follow the instructions carefully. In doing so you will ensure the safety of yourself and that of others around you, and you can look forward to your purchase giving you long and satisfactory service.

GUARANTEE

This product is guaranteed against faulty manufacture for a period of 12 months from the date of purchase. Please keep your receipt which will be required as proof of purchase.

This guarantee is invalid if the product is found to have been abused or tampered with in any way, or not used for the purpose for which it was intended.

Faulty goods should be returned to their place of purchase, no product can be returned to us without prior permission.

This guarantee does not effect your statutory rights.

ENVIRONMENTAL RECYCLING POLICY



Through purchase of this product, the customer is taking on the obligation to deal with the WEEE in accordance with the WEEE regulations in relation to the treatment, recycling & recovery and environmentally sound disposal of the WEEE.

In effect, this means that this product must not be disposed of with general household waste. It must be disposed of according to the laws governing Waste Electrical and Electronic Equipment (WEEE) at a recognised disposal facility.

If disposing of this product or any damaged components, do not dispose of with general waste. This product contains valuable raw materials. Metal products should be taken to your local civic amenity site for recycling of metal products.

SPECIFICATION

Model Number	CEA150
Voltage	230 V @ 50 Hz
Duty Cycle	Continuous
Output Speed	200 rpm
Overload Clutch Torque	120 Nm
Sound Pressure Level (L _{pA} dB)	90 dB(A)
Guaranteed Sound Power (L _{wA} dB)	102 dB(A)
Vibration	5.5m/s ² (K=1.5 m/s ²)
Dimensions with auger (L x W x H)	360 x 600 x 1105 mm
Product Weight (complete)	12.35 Kg
Auger Diameter	150 mm
Auger Overall Length	800 mm
Auger Effective Length	560 mm

GENERAL SAFETY RULES



WARNING: WHEN USING ELECTRIC TOOLS, MACHINES, OR EQUIPMENT, BASIC SAFETY PRECAUTIONS SHOULD ALWAYS BE FOLLOWED TO REDUCE THE RISK OF FIRE, ELECTRIC SHOCK OR PERSONAL INJURY.

1. Keep the work area clean. Cluttered areas invite injuries. Keep work area well lit.
2. **NEVER** use power tools in damp, wet, or poorly lit locations. Don't expose to rain. **DO NOT** use electrically powered tools in the presence of flammable gases or liquids.
3. Keep children away. Children must never be allowed in the work area. **DO NOT** let them handle machines, tools, or extension cables.
4. Store idle equipment. When not in use, tools must be locked up in a dry location to inhibit rust. **ALWAYS** lock up tools and keep out of reach of children.
5. **DO NOT** force the machine. It will do the job better and more safely at the rate for which it was intended.
6. Dress properly. **DO NOT** wear loose clothing or jewellery which could be caught in moving parts.

7. Use eye and hand protection and footwear for this type of appliance. **ALWAYS** wear approved impact safety goggles.
8. **DO NOT** abuse the power cable. Do not yank it to disconnect it from the socket. **DO NOT** carry power tools by the cable.
9. Unplug when not in use, before servicing and when changing accessories.
10. Avoid unintentional starting. Be sure the switch is in the OFF position when not in use and before plugging in.
11. Stay alert. Watch what you are doing, use common sense. **DO NOT** operate any machine when you are tired.
12. Check for damaged parts. Before using any machine, any part that appears damaged should be carefully checked to determine that it will operate properly and perform its intended function. **DO NOT** use if the switch does not turn on and off properly.
13. Guard against electric shock. Prevent body contact with grounded surfaces.
14. When servicing, your Clarke dealer will only use only identical replacement parts. Use of any other parts will void the warranty. Only use accessories intended for use with this machine.
15. **DO NOT** operate if under the influence of alcohol or drugs. If there is any doubt, **DO NOT** use.
16. **NEVER** use this machine for boring in landfill or soil known to contain large rocks or unknown debris.
17. **ALWAYS** be alert and adopt a firm stance when handling the machine. Be prepared for the machine to jar suddenly, should the auger come into contact with a submerged or heavy object, heavy clay, or tree roots etc.
18. **ALWAYS** check to ensure the auger securing pin is secure before each use.
19. **ALWAYS** use both hands to control the machine.
20. **ALWAYS** check, before use, to ensure there are no submerged drains, pipes, culverts etc, that may interfere with the boring operation.
21. **ALWAYS** keep bystanders well clear of the boring operation.

ELECTRICAL CONNECTIONS



WARNING: READ THESE ELECTRICAL SAFETY INSTRUCTIONS THOROUGHLY BEFORE CONNECTING THE PRODUCT TO THE MAINS SUPPLY.

Before switching the product on, make sure that the voltage of your electricity supply is the same as that indicated on the rating plate. This product is designed to operate on 230VAC 50Hz. Connecting it to any other power source may cause damage.

This product may be fitted with a non-rewireable plug. If it is necessary to change the fuse in the plug, the fuse cover must be refitted. If the fuse cover becomes lost or damaged, the plug must not be used until a suitable replacement is obtained.

If the plug has to be changed because it is not suitable for your socket, or due to damage, it should be cut off and a replacement fitted, following the wiring instructions shown below. The old plug must be disposed of safely, as insertion into a mains socket could cause an electrical hazard.

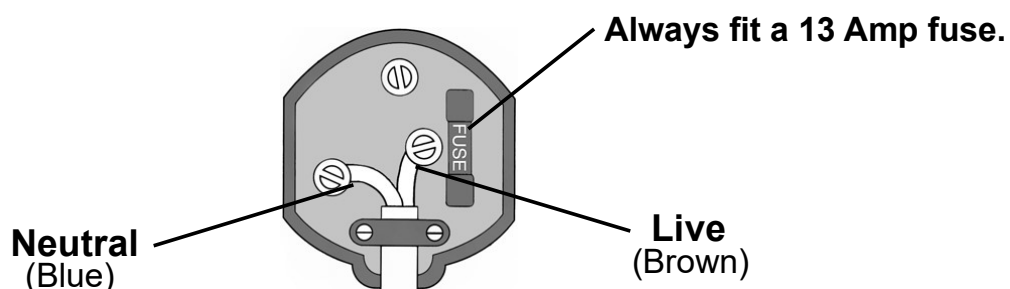


WARNING! The wires in the power cable of this product are coloured in accordance with the following code:
Blue = Neutral Brown = Live

If the colours of the wires in the power cable of this product do not correspond with the markings on the terminals of your plug, proceed as follows.

- The wire which is coloured **Blue** must be connected to the terminal which is marked **N** or coloured **Black**.
- The wire which is coloured **Brown** must be connected to the terminal which is marked **L** or coloured **Red**.

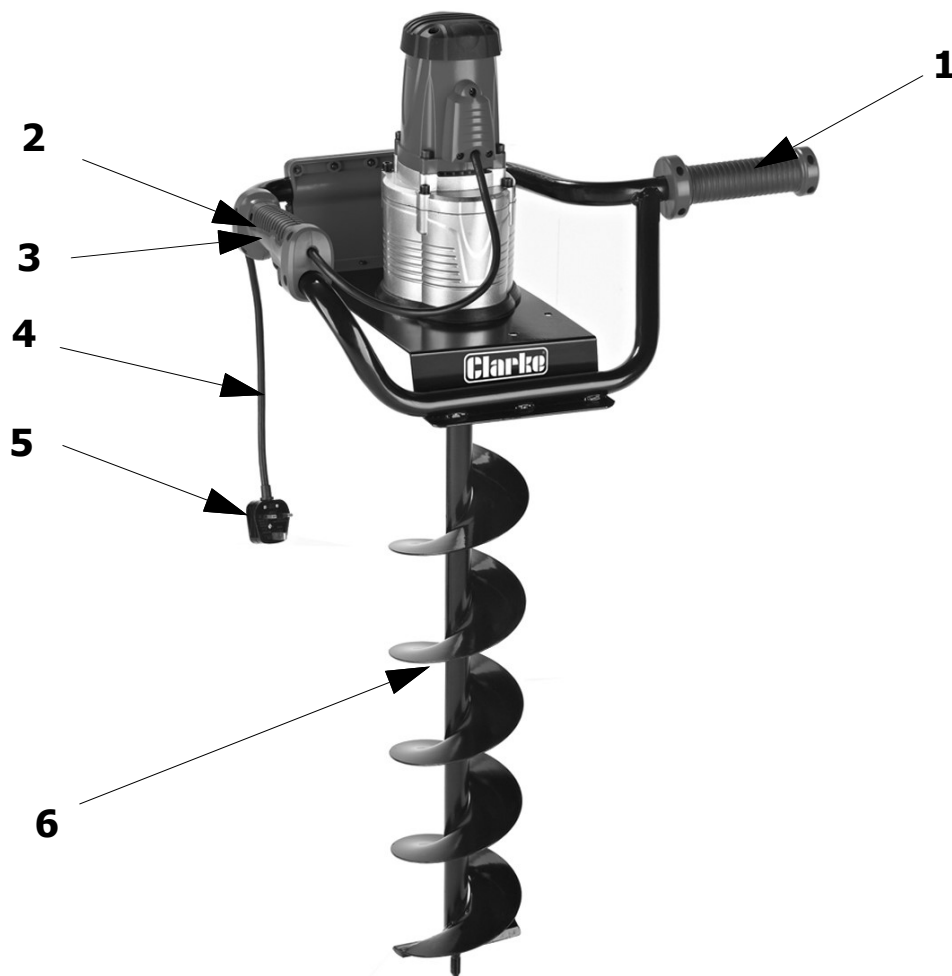
Plug must be BS1363/A approved.



Ensure that the outer sheath of the cable is firmly held by the clamp

We strongly recommend that this machine is connected to the mains supply via a Residual Current Device (RCD) If in any doubt, consult a qualified electrician. **DO NOT** attempt any repairs yourself. This is a class II product which does not require an earth connection.

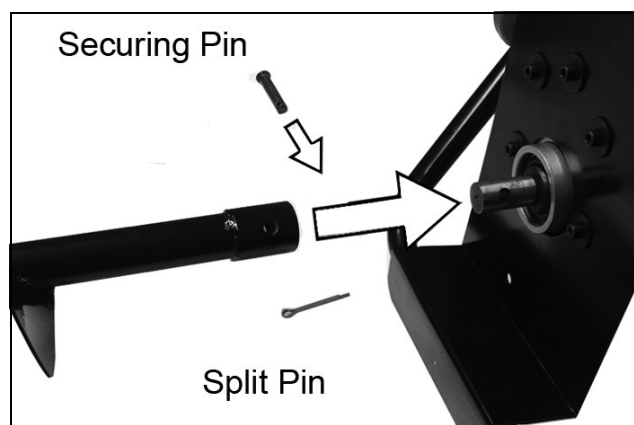
PRODUCT OVERVIEW



No	DESCRIPTION	No	DESCRIPTION
1	Left Handle	4	Power Cable
2	Right Handle	5	Power Plug
3	Trigger Switch with Lock	6	Auger Bit

INSTALLING THE AUGER BIT

1. Slide the auger bit onto the drive shaft, insert the securing pin and secure with the split pin provided.
2. Plug the auger into a suitable mains power outlet via a suitable extension cable marked for outdoor use.
 - The extension cable must be suitable to carry the current needed. An undersized cable will cause the voltage to drop and cause it to overheat.



OPERATION

BEFORE STARTING

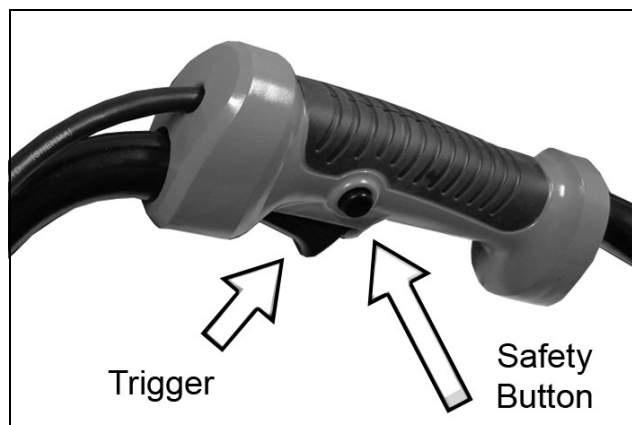
1. Clear vegetation from around the location of the hole.
 - This will prevent vegetation from binding around the auger bit.
2. **DO NOT** use the auger on rocky ground.
3. Examine the extension cable frequently for damage.

POSITIONING YOURSELF DURING USE

1. Use a wide, stable stance.
2. Keep your feet away from the auger.
3. Hold the handles tightly.
4. Make sure that you keep the extension cable away from the auger bit.

USING THE AUGER

1. Put the point of the auger at the location of the hole.
2. Depress the safety button and slowly squeeze the trigger to start the machine.
 - The auger bit will start rotating.
3. Apply a light downward pressure to drill the hole.
4. Periodically, raise the auger to help clear drilling debris from the hole.



NOTE: Overloading the auger during use can cause it to stop turning. If this occurs, lift the auger to decrease the load on the motor and allow material to be lifted out of the hole before you continue.

MAINTENANCE

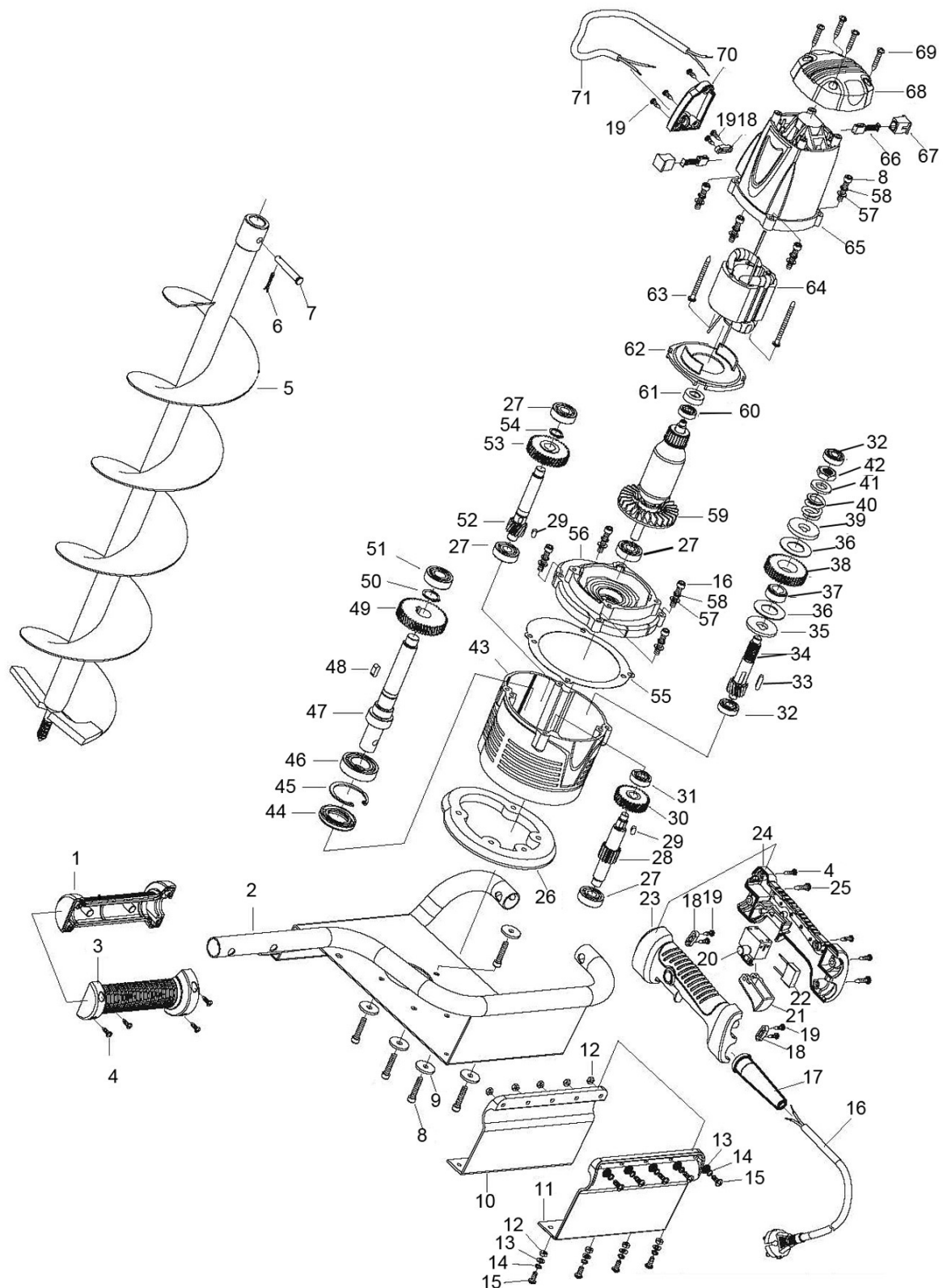


WARNING: ALWAYS DISCONNECT FROM THE POWER SUPPLY BEFORE CLEANING OR PERFORMING ANY MAINTENANCE TASKS.

CLEANING

1. Keep the surface of your machine free of dirt. Use a cloth dampened with soapy water. DO NOT use petroleum based solvents or abrasives. Never immerse the machine in any liquid.
2. The auger bit should be removed and cleaned separately.
3. If the motor/drive mechanism does not operate it needs to be serviced or replaced by a qualified technician.
4. Store the machine in a secure, dry place, out of reach of children.

PARTS LIST AND DIAGRAM



ID	DESCRIPTION
1	Left Handle Half
2	Supporting Frame
3	Right Handle Half
4	Screw
5	Auger Bit
6	Bolt
7	Pin
8	Screw
9	Washer
10	Inner Cover Board
11	Outer Cover Board
12	Nut
13	Washer
14	Spring Washer
15	Screw
16	Power Cable
17	Cable Gland
18	Cable Clamp
19	Screw
20	Switch
21	Switch Button
22	Capacitor
23	Left Handle Half
24	Right Handle Half
25	Screw

ID	DESCRIPTION
26	Rubber Gasket
27	Bearing
28	Gear Spindle
29	Woodruff Key
30	Drive Gear
31	Bearing
32	Bearing
33	Woodruff Key
34	Gear Spindle
35	Lower Flange Washer
36	Friction Disc
37	Gear Sleeve
38	Gear
39	Upper Flange Washer
40	Coil Spring
41	Spring Flange Washer
42	Nut
43	Gear Casing
44	Oil Seal
45	Circlip
46	Bearing
47	Spindle
48	Woodruff Key
49	Drive Gear
50	Circlip

ID	DESCRIPTION
51	Bearing
52	Gear Spindle
53	Gear
54	Circlip
55	Oil-Proof Paper Seal
56	Centre Cover
57	Washer
58	Spring Washer
59	Rotor
60	Bearing
61	Bearing Cover
63	Screw
64	Stator
65	Motor Housing
66	Carbon Brush
67	Carbon Brush Holder
68	Rear Cover
69	Screw
70	Safety Cover
71	Connecting Wire

DECLARATIONS OF CONFORMITY - UKCA & CE

**UK
CA**

Clarke[®]
INTERNATIONAL
Hemnal Street, Epping, Essex, CM16 4LG

DECLARATION OF CONFORMITY

This is an important document and should be retained.

We hereby declare that this product(s) complies with the following legislation:

2014/30/EU Electromagnetic Compatibility Directive
2006/42/EC Machinery Directive
2011/65/EU Restriction of Hazardous Substances (RoHS) Directive

The following standards have been applied to the product(s):

EN 60335-1:2012+A11:2014+A13:2017+A1:2019+A2:2019+A14:2019+A15:2021, EN ISO 3744:1995,
IEC 62321-3-1:2013, IEC 62321-7-1:2015, IEC 62321-7-2:2017, IEC 62321-1:2013, ISO 17075:2017,
EN IEC 61000-3-2:2019+A1:2021, EN IEC 55014-1:2021, EN IEC 55014-2:2021, IEC 62321-2:2021,
EN 61000-3-3:2013+A1:2019+A2:2021, EN ISO 12100:2010, IEC 62321-5:2013, IEC 62321-6:2015,
IEC 62321-4:2013+AMD1:2017, IEC 62321-8:2017, ISO 11094:1991

The technical documentation required to demonstrate that the product(s) meet(s) the requirement(s) of the aforementioned legislation has been compiled and is available for inspection by the relevant enforcement authorities.

The UKCA mark was first applied in: 2022

Product Description: Earth Auger
Model Number(s): CEA150
Serial/Batch Number: Refer to product/packaging label
Date of Issue: 29/08/2025

Signed:



J.A. Clarke
Director

CEA150 UKCA Clarke DOC 082925

Page 1 of 1

CE

Clarke[®]
INTERNATIONAL
Fitzwilliam Hall, Fitzwilliam Place, Dublin 2

DECLARATION OF CONFORMITY

This is an important document and should be retained.

We hereby declare that this product(s) complies with the following legislation:

2014/30/EU Electromagnetic Compatibility Directive
2006/42/EC Machinery Directive
2011/65/EU Restriction of Hazardous Substances (RoHS) Directive

The following standards have been applied to the product(s):

EN 60335-1:2012+A11:2014+A13:2017+A1:2019+A2:2019+A14:2019+A15:2021, EN ISO 3744:1995,
IEC 62321-3-1:2013, IEC 62321-7-1:2015, IEC 62321-7-2:2017, IEC 62321-1:2013, ISO 17075:2017,
EN IEC 61000-3-2:2019+A1:2021, EN IEC 55014-1:2021, EN IEC 55014-2:2021, IEC 62321-2:2021,
EN 61000-3-3:2013+A1:2019+A2:2021, EN ISO 12100:2010, IEC 62321-5:2013, IEC 62321-6:2015,
IEC 62321-4:2013+AMD1:2017, IEC 62321-8:2017, ISO 11094:1991

The technical documentation required to demonstrate that the product(s) meet(s) the requirement(s) of the aforementioned legislation has been compiled and is available for inspection by the relevant enforcement authorities.

The CE mark was first applied in: 2010

Product Description: Earth Auger
Model Number(s): CEA150
Serial/Batch Number: Refer to product/packaging label
Date of Issue: 29/08/2025

Signed:



J.A. Clarke
Director

CEA150 CE Clarke DOC 082925

Page 1 of 1

A SELECTION FROM THE VAST RANGE OF

Clarke®

QUALITY PRODUCTS



AIR COMPRESSORS
From DIY to industrial, Plus air tools, spray guns and accessories.

GENERATORS
Prime duty or emergency standby for business, home and leisure.

POWER WASHERS
Hot and cold, electric and engine driven - we have what you need

WELDERS
Mig, Arc, Tig and Spot. From DIY to auto/industrial.

METALWORKING
Drills, grinders and saws for DIY and professional use.

WOODWORKING
Saws, sanders, lathes, mortisers and dust extraction.

HYDRAULICS
Cranes, body repair kits, transmission jacks for all types of workshop use.

WATER PUMPS
Submersible, electric and engine driven for DIY, agriculture and industry.

POWERTOOLS
Angle grinders, cordless drill sets, saws and sanders.

STARTERS/CHARGERS
All sizes for car and commercial use.



PARTS & SERVICE:

0208 988 7400

Parts Enquiries
Parts@clarkeinternational.com

Servicing & Technical Enquiries
Service@clarkeinternational.com

SALES: UK 01992 565333 or Export 00 44 (0)1992 565335

Clarke® INTERNATIONAL Hemnall Street, Epping, Essex CM16 4LG
www.clarkeinternational.com